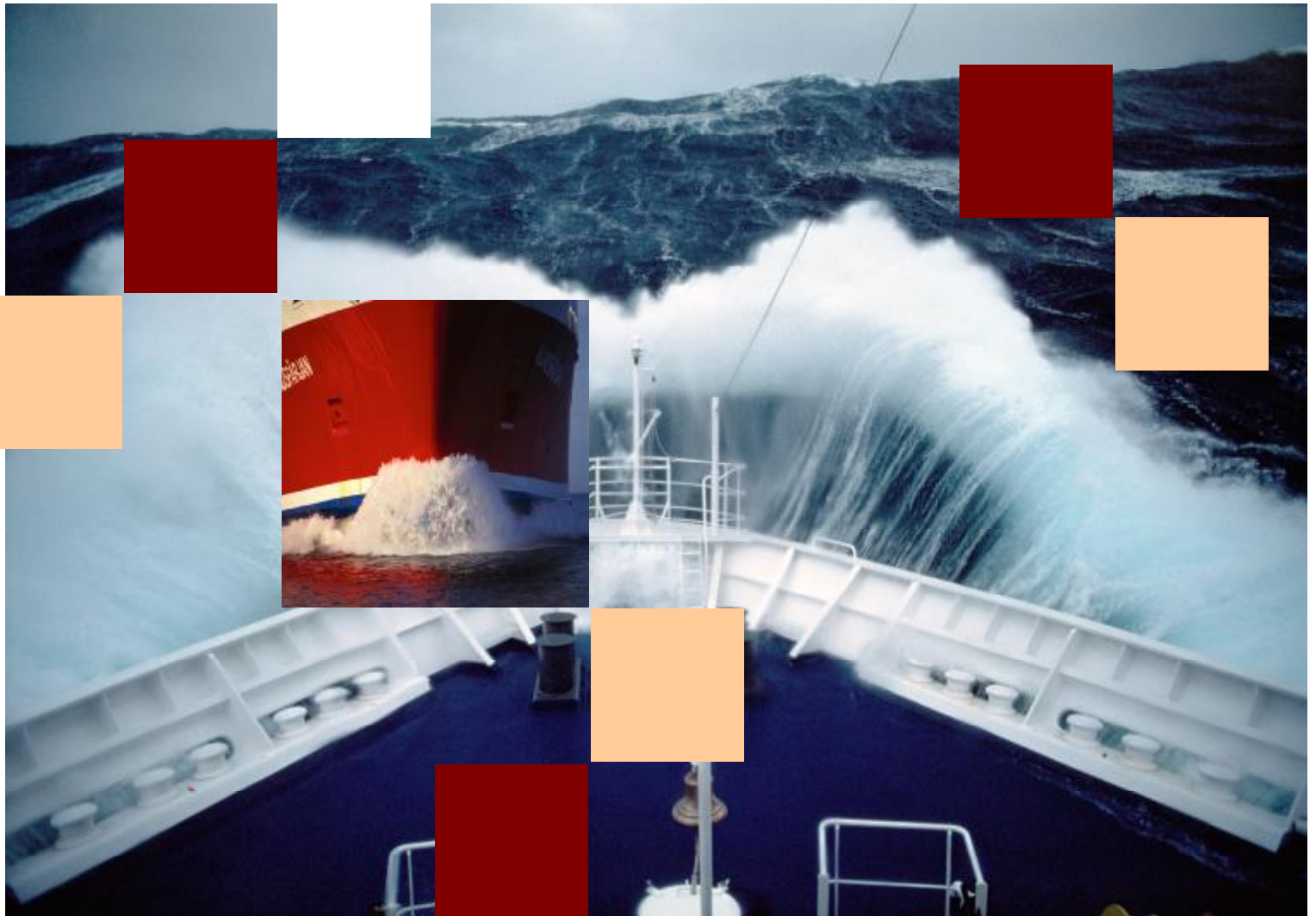


# easeabay - multi-ship bay planning



**easeacon**  
by marine alignment as

**cargo planning & loading computer systems**

## Preface

This pamphlet gives a short description of various Easeabay features. Each leaflet title is accompanied by a screen dump example.

\*

Easeabay is a self-defining software for customers having the need to plan a fleet of container vessels; the fleet being subject to constant changes. This product enables the user to define the bay configuration of any container vessel. The vessel particulars, hydrostatic data, lightweight distribution, etc. can also be entered if it is desired to include stability and/or strength calculations.

\*

Should you have any comments or questions to this pamphlet, please do not hesitate to contact us.

\*

## Company profile

Marine Alignment A/S is a Danish company specializing in software programs to be used primarily on board ocean-going vessels. We have over 20 years of experience in developing loading and planning software and can count more than 1,100 installations today. Our brands are Easeacon and Easeabay. The onboard and single ship planning software Easeacon is approved by all the major Classification Societies and has proven to be a reliable tool for efficient contemporary ships operation. The multi-ship planning software EaseaBay is used by ship planners having frequent changes to the container ship fleet. Our strengths are our high-quality products, flexibility, quick feedback time and our great expertise within our line of business. We consider ourselves a reliable and professional supplier of strength and stability calculations and cargo planning software.

Farum, Denmark, 2010



marine alignment a/s  
hirsemarken 5  
dk – 3520 farum  
denmark

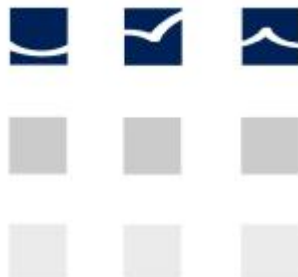
**easeacon**  
by marine alignment as

phone +45 4495 1321  
fax +45 4495 1723  
e-mail [easeacon@easeacon.com](mailto:easeacon@easeacon.com)  
website [www.easeacon.com](http://www.easeacon.com)

## Contents

Typical software specification .....	4
Ship's definition .....	5
Condition Selection.....	8
Bay Module (Container Planning) .....	9
Breakbulk Module.....	10
Tank Planning.....	11
General Information Views.....	12
Print Facilities .....	13

marine alignment a/s  
hirsemarken 5  
dk – 3520 farum  
denmark



**easeacon**  
by marine alignment as

phone +45 4495 1321  
fax +45 4495 1723  
e-mail [easeacon@easeacon.com](mailto:easeacon@easeacon.com)  
website [www.easeacon.com](http://www.easeacon.com)

## Typical Software Specification

### Container Planning

- ü Graphical and tabular work environment.
- ü Zoom function.
- ü Loading/unloading of containers by bay, stack, tier and/or individually.
- ü Discharge by POD or operator specified code.
- ü Printing of Loading and Discharge Plans.
- ü Printing of Bay Plans as designed by operator.
- ü Checking and warning of stack weights (incl. "per end", when 40' on 20'), stack heights and reefer support connections.
- ü Checking of flyers, double stowing and duplicate ID nos.
- ü Tracking and sorting of containers according to operator specified code.
- ü Export/Import of container data in BAPLIE 1.5 or 2.0 formats.

### BreakBulk Cargo Planning

- ü Graphical and tabular work environment.
- ü Specification of Cargo type, ID numbers, POD, POL, Packing type weight, volume, size, position, etc. etc.
- ü Height and weight checking and warning.
- ü Tracking and sorting of cargo items according to operator specified code.
- ü Extensive cargo item library facilities.

### Condition Selection

- ü 90+ conditions or more with input of POL, POD, Voyage no., date, ship planner initials.
- ü Automatic backup of conditions in case of e.g. power failure.
- ü Access to backup/restore and archive facilities (ZIP).

### On-screen Views (where applicable)

- ü Deadweight summary; listing of all weight and moment particulars.
- ü Trim and Heel indicator; ship seen floating at actual draughts.
- ü Draughts, stability and strength information.
- ü Stability calculation with GZ curve, intact and dynamic, where applicable.
- ü Strength and load curves.

### Tank Planning

- ü Quick filling and emptying of individual tanks.
- ü Anti heeling.
- ü Free surface correction in each tank.
- ü Weight, volume and COG for each tank calculated at actual filling level.

### Other facilities

- ü Warnings for displacement and strength excursions, inadequate GM, etc.
- ü Printing in pdf directly from Easeabay.
- ü Email support invoked from within Easeabay.
- ü User's Manual in hardcopy and in pdf format.

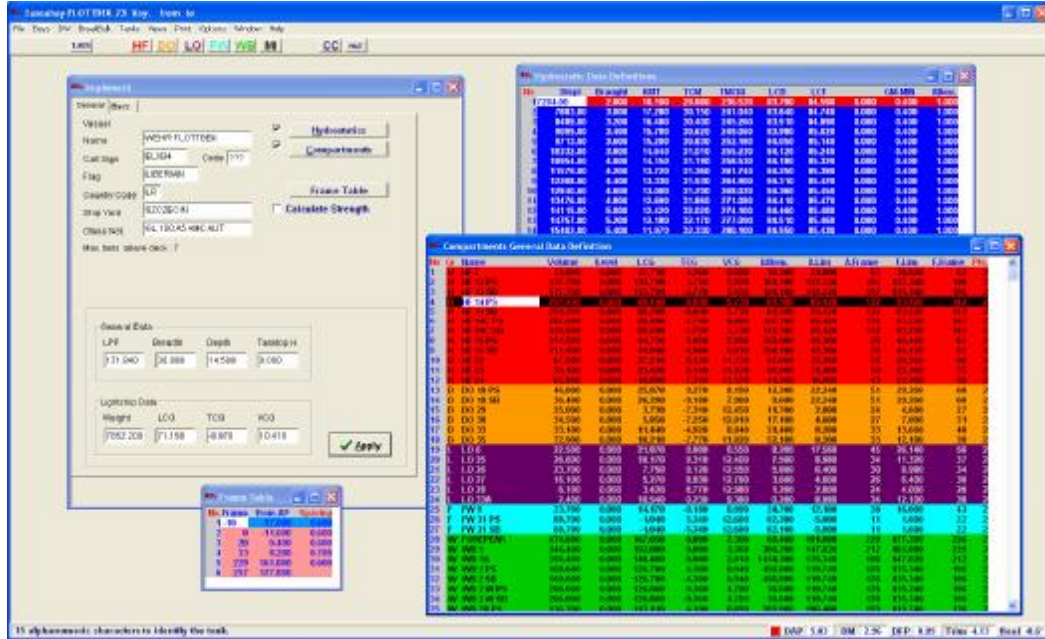


**easeacon**  
by marine alignment as

marine alignment a/s  
hirsemarken 5  
dk – 3520 farum  
denmark

phone +45 4495 1321  
fax +45 4495 1723  
e-mail [easeacon@easeacon.com](mailto:easeacon@easeacon.com)  
website [www.easeacon.com](http://www.easeacon.com)

## Ship's definition



The various ship's particulars are entered in a separate module, which is password protected from the operational part of Easeabay.

The "implementation" interface will show the available features depending on the modules included in the Easeabay programme.

The data implementation is based on a step-by-step sequence with constraints between the various parts.

Easy reference and unit converters are available in the menus to make it easier to change the original data format. Further, Easeabay is open for copy-and-paste, so if you receive your data in a spreadsheet format, it can be copied directly into Easeabay.

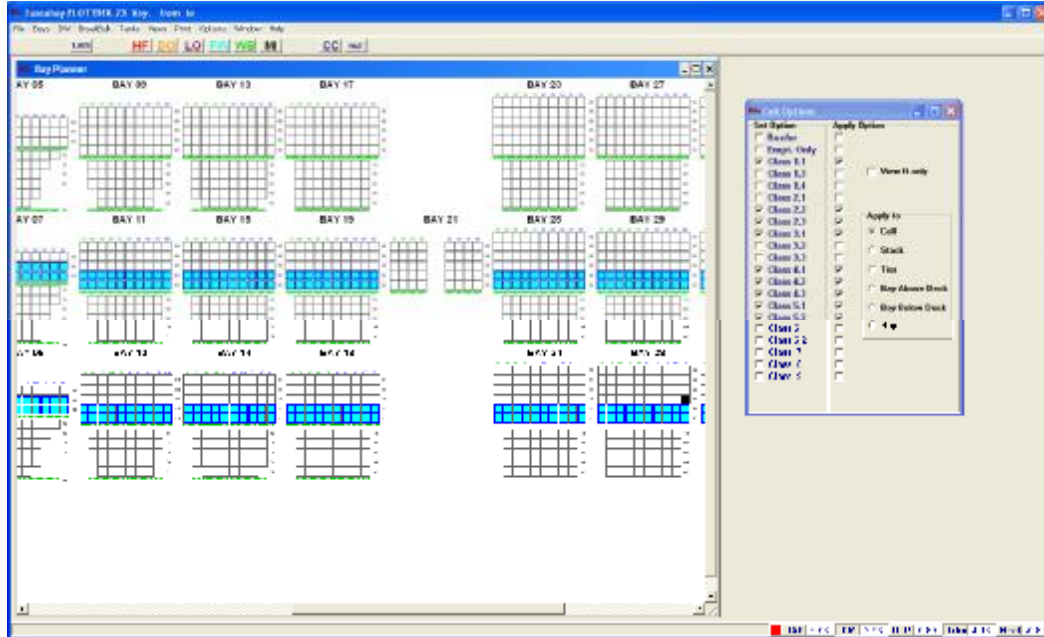
marine alignment a/s  
hirsemarken 5  
dk – 3520 farum  
denmark



phone +45 4495 1321  
fax +45 4495 1723  
e-mail [easeacon@easeacon.com](mailto:easeacon@easeacon.com)  
website [www.easeacon.com](http://www.easeacon.com)



## Ship's definition - continued



The raw bay configuration, as made in the tables, is illustrated in the graphics view which resembles the environment in which the actual bay planning work is carried out.

The configuration fine tuning is on cell level, where you can set applicable reefer positions, or allow empties only, or even set the permission to carry dangerous goods per cell, stack, tier or bay.

Please note that the implementation of ship's data can also be offered done by the Easeacon team at Marine Alignment A/S. This may be feasible if you only get new ships in the fleet a couple of times per year and therefore do not remember how it is done from case to case.

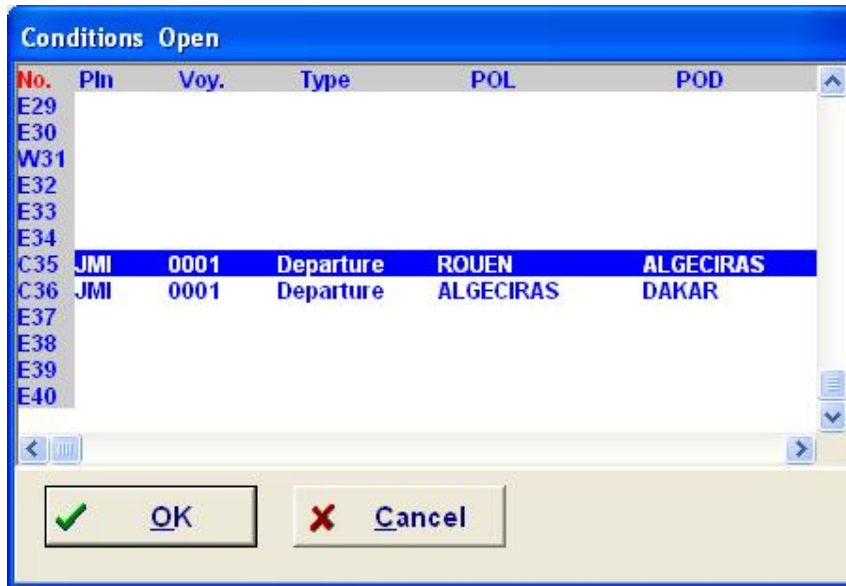


**easeacon**  
by marine alignment as

marine alignment a/s  
hirsemarken 5  
dk – 3520 farum  
denmark

phone +45 4495 1321  
fax +45 4495 1723  
e-mail [easeacon@easeacon.com](mailto:easeacon@easeacon.com)  
website [www.easeacon.com](http://www.easeacon.com)

## Condition Selection



The Condition Select module lists all the conditions on the hard disk drive. From this list you may choose between 40 different conditions, each identified by input of POL, POD, Voyage No., Date and Ship Planner's initials, etc.

You may see which condition numbers are occupied, and which are vacant.

By copying the current condition to the next vacant number, it is easy to make a thorough pre-planning of the coming voyage based on the current or a previous one.

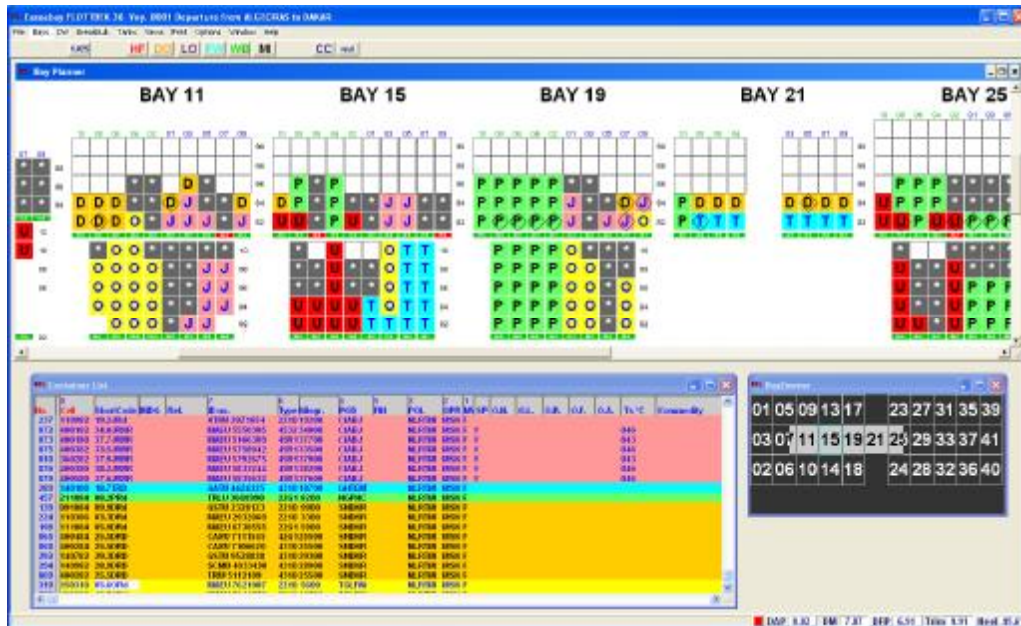
Automatic backup of the current condition ensures that you never lose any condition data in case of e.g. a power failure.

marine alignment a/s  
hirsemarken 5  
dk – 3520 farum  
denmark



phone +45 4495 1321  
fax +45 4495 1723  
e-mail [easeacon@easeacon.com](mailto:easeacon@easeacon.com)  
website [www.easeacon.com](http://www.easeacon.com)

## Bay Module



The Bay Module consists of three working windows, the Bay Planner, the Container List and the Bay Zoomer. Together, these three windows enhance the general overview.

Loading, unloading and shifting containers may be done individually as well as by bay, tier, or stack. You have an integrated search/track facility, by which containers are easily found and by which you may produce any type of bay plan (IMDG, discharge, reefer plans, etc.).

A great number of facilities are standard, (stack weights and heights check, double stowing check, reefer support check, etc.), and even more facilities may be chosen from the range of optional modules, such as Booking & Quick loading, MOVINS and Crane Split.

Your cargo information can be transferred directly from the central planning office to the loading computer onboard, avoiding the manually keyboard work taking so much time.

marine alignment a/s  
hirsemarken 5  
dk – 3520 farum  
denmark



phone +45 4495 1321  
fax +45 4495 1723  
e-mail [easeacon@easeacon.com](mailto:easeacon@easeacon.com)  
website [www.easeacon.com](http://www.easeacon.com)

## Breakbulk Module



The BreakBulk module includes both tabular and graphics windows providing full overview of the cargo situation.

Modules for container planning on multiple decks in a tier view mode, and cargo hold planning of palletised goods are available.

The BreakBulk Planner window is a zoomed area, given the operator a better possibility to optimise the stowage of more cargo items. The cargo may be sized and positioned with use of the mouse, or more accurately by direct input of physical properties and LCG, VCG and TCG coordinates.

The BreakBulk Zoomer provides the general overview of the entire loading situation and indicates the location of the zoomed area.

The BreakBulk List holds the detailed information of each cargo item.

Each cargo item is easily recognised by its colours.

A library can be accessed and modified to suit the frequent loading of standard or off-standard cargo items.

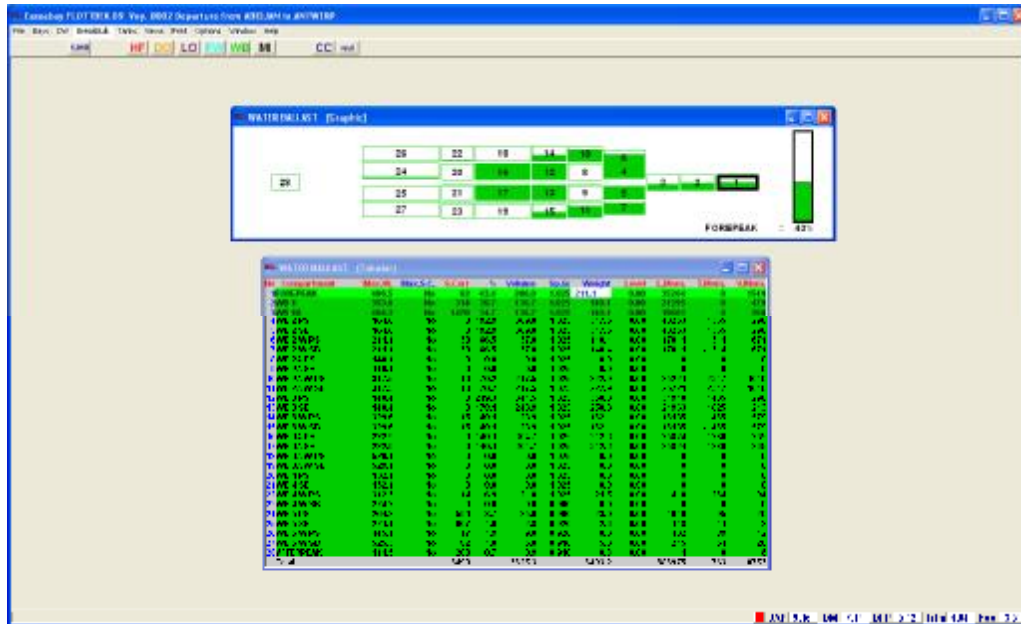


marine alignment a/s  
hirsemarken 5  
dk – 3520 farum  
denmark

**easeacon**  
by marine alignment as

phone +45 4495 1321  
fax +45 4495 1723  
e-mail [easeacon@easeacon.com](mailto:easeacon@easeacon.com)  
website [www.easeacon.com](http://www.easeacon.com)

## Tank Planning



The Tank Planning module provides you with an excellent planning tool and general overview and is, like all the cargo modules available in Easeabay, based on both tabular and graphical working environments in two different windows working together:

The Tabular window lists the tanks in the sequence familiar from the approved Loading and Stability manual and Capacity Plans. For each tank, you may select your input to filling percentage, volume specific gravity and weight.

The Graphics window shows the various tanks positioned in a plan view. A level gauge may be used to change the tank filling.

Quick filling, emptying and anti-heeling buttons ensure the feasibility of the module to assess e.g. the adequate water ballast situation.

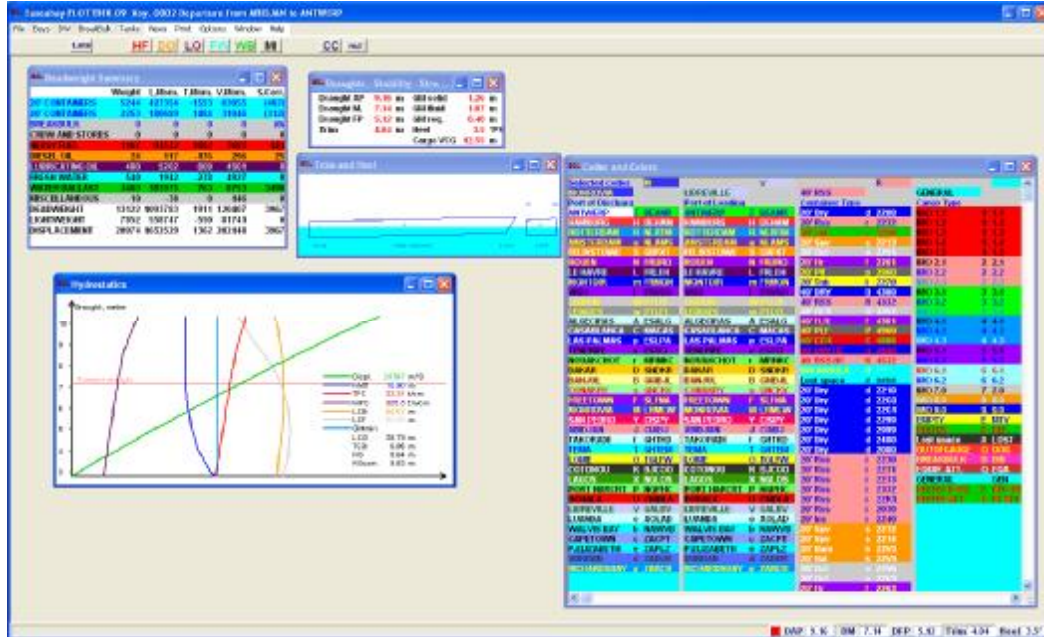


**easeacon**  
by marine alignment as

marine alignment a/s  
hirsemarken 5  
dk – 3520 farum  
denmark

phone +45 4495 1321  
fax +45 4495 1723  
e-mail [easeacon@easeacon.com](mailto:easeacon@easeacon.com)  
website [www.easeacon.com](http://www.easeacon.com)

## General Information Views

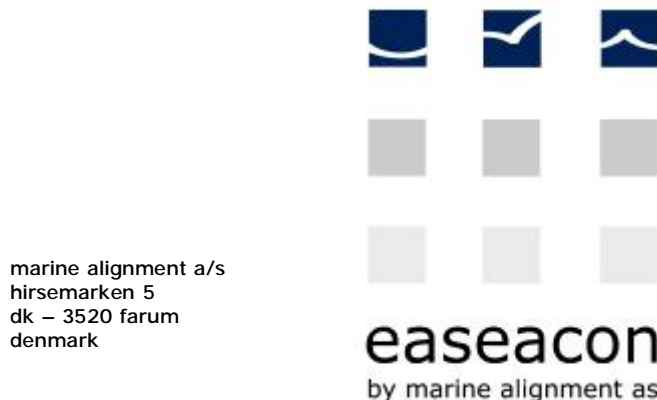


Easeabay provides a number of windows enhancing the general condition overview. Among these various graphic and tabular windows, which summarise the current condition, thus being unavailable for input.

The Deadweight Summary yields a tabular overview of displacement, weights, COG's, number of containers, free surface moments, etc.

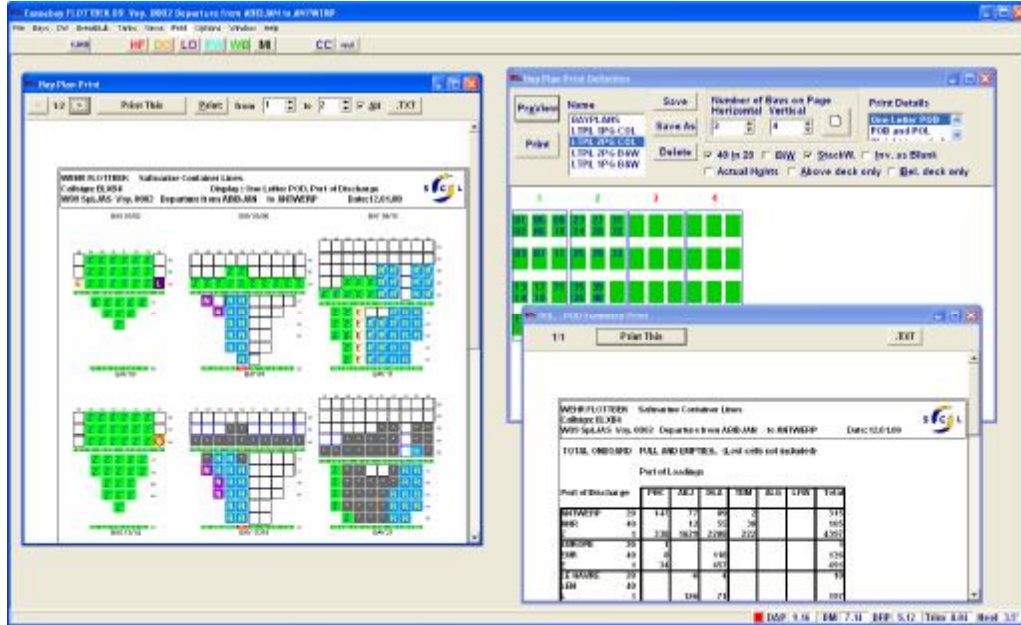
The Draught-Stability-Strength window informs the user of Draughts, Stability, Shear Force, Bending Moment and Torque Moment highlighting values, which exceed the maximum allowable.

The ship's immersion is visualised in the Trim and Heel window, whereas both the stability curves and the detailed hydrostatic data are shown in windows of their own.



phone +45 4495 1321  
 fax +45 4495 1723  
 e-mail [easeacon@easeacon.com](mailto:easeacon@easeacon.com)  
 website [www.easeacon.com](http://www.easeacon.com)

## Print Facilities



The Print module facilitates extensive documentation for all the purposes you may request. It is also a module frequently subject to tailor-making to accommodate the special wishes of the individual customer.

All the various print options enable previewing prior to actual printing.

Let's mention printout facilities such as cargo breakdowns, cargo reports, load and discharge plans, IMDG plans, reefer plans, condition document, tanks, strength, stability, etc.; these are all available from this menu.

In addition, it is possible for the user on e.g. container vessels to modify Bay Plans to meet any needs regarding layout and detail. A dialogue box is provided enabling tracking based on different criteria (e.g. POD, operator, weight, etc.).

All relevant documents such as cargo plans etc. can be either printed out and faxed to or from the vessel, or e-mailed as attachments.

marine alignment a/s  
hirsemarken 5  
dk – 3520 farum  
denmark



phone +45 4495 1321  
fax +45 4495 1723  
e-mail [easeacon@easeacon.com](mailto:easeacon@easeacon.com)  
website [www.easeacon.com](http://www.easeacon.com)